

EDGY MODS

Audi A8 & S8 2018 – 2025 Instructions

Make sure no power is on.

Spray a little WD40 or similar lubricant on the factory Link ends before removal.

Front:

1. Jack up each corner and locate the stock ride height sensor Link. They're located on the lower control arms.
2. Remove the stock Links by using a small adjustable wrench. Twist gently by the Control Arm side and it will pop off. Once one side is off, bend it backwards against the sensor arm but be careful not to break off the plastic ball stud.
3. **Shortening the Link from the factory length will lower the vehicle.** Each 5mm shorter than stock will lower approx. $\frac{3}{4}$ - 1 inch. Set the new Adjustable Links so that they are equal in length
4. Install Adjustable Links with long end up.

Rear:

1. Jack up the rear and locate the stock ride height sensor Links.
2. Remove it the same way as the front.
3. **Shortening the Link from the factory length will lower the vehicle.** Each 5mm shorter than stock will lower approx. $\frac{3}{4}$ - 1 inch. Set the new Adjustable Links so they are equal in length.
4. Install with long end up.

Start the vehicle, raise it up and down and move it forward and back to get the suspension active to the new settings. If you are not happy with the height you can easily re-adjust each Link. Just remove 1 side and give it a few turns. Usually, 2 turns is about a $\frac{1}{4}$ inch in height.

Depending how low you make the vehicle a wheel alignment may be required to reduce tire wear.

Always looking to add more photos to our gallery. Submit yours by email or text.

Thank you for the purchase. If you have any questions, please don't hesitate to ask any time via phone or Email.

John Vranic

www.edgymods.com

604-780-7734



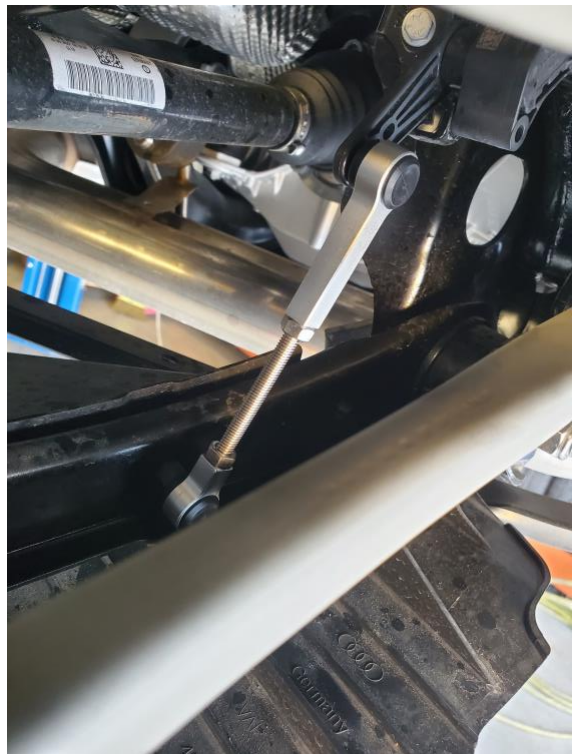
Front Stock Link



Adjustable Link Installed



Rear Adjustable Link



Adjustable Link Installed