

EDGY MODS

Denali, Tahoe, Suburban & Yukon Lowering Instructions

Before you begin the install disable the Auto Entry / Exit feature then make sure the power is off. After lowering and you try the lowest setting, Entry Mode, the vehicle will drop and then shoot back up. To make it stay low move slowly. Around 5mph and then press the lower button. To obtain a 2" drop make the front Links 165mm long overall and the rears 108mm.

Front:

1. Jack up the front corner and locate the stock ride height sensor Link. It's straight inside the wheel well right above the tire. You can do the rear at the same time without repositioning the jack.
2. To remove the factory Link pop off the Control Arm side first using a flat head screwdriver.
To do the sensor side you must push out the little Pin and then slide it off the ball stud.
3. **Lengthening the Link from the factory length will lower the vehicle.** Each 5mm longer than stock will lower approx. $\frac{1}{2}$ - $\frac{3}{4}$ inch. Set the new Adjustable Links so they are equal in length.
4. Install Adjustable Links with the long end up. Blue end to the Control Arm and Black end to Sensor.

Rear:

1. While you have the front corner jacked up, do the rear. They are located right in front of the rear tire.
2. Remove the same way as the front. Control Arm side first and then be sure to remove the pin.
3. **Shortening the Link from the factory length will lower the vehicle.** Each 5mm shorter than stock will lower approx. $\frac{1}{2}$ - $\frac{3}{4}$ inch. Set the new Adjustable Links to equal lengths.
4. Install with long end up. Black end to the Sensor and Blue end to Control Arm.

Start the vehicle, raise it up and down and move it forward and back to get the suspension active to the new settings. If you are not happy with the height you can easily re-adjust each Link. Just remove 1 side and give it a few turns. Usually, 3 turns is about a $\frac{1}{4}$ inch in height.

Depending how low you make the vehicle a wheel alignment may be required to reduce tire wear.

Always looking to add more photos to our gallery. Submit yours by email or text.

Thank you for the purchase. If you have any questions, please don't hesitate to ask any time via phone or Email.

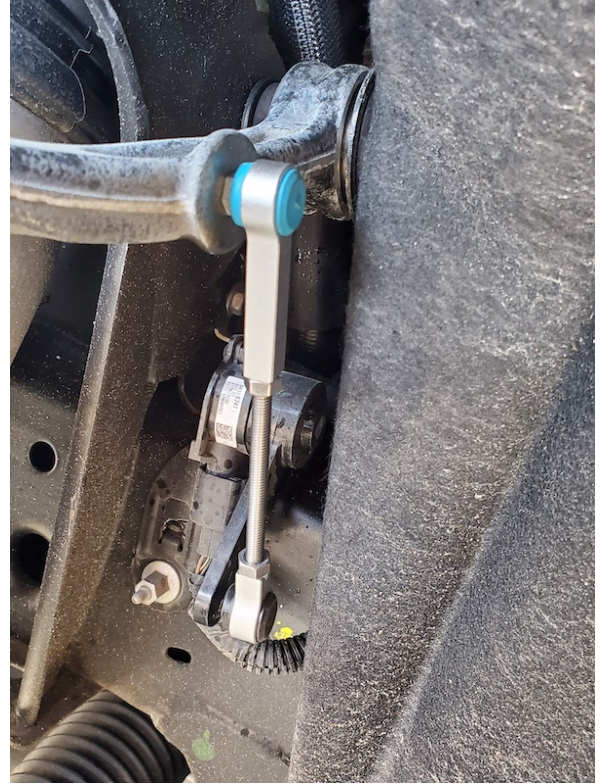
John Vranic

www.edgymods.com

604-780-7734



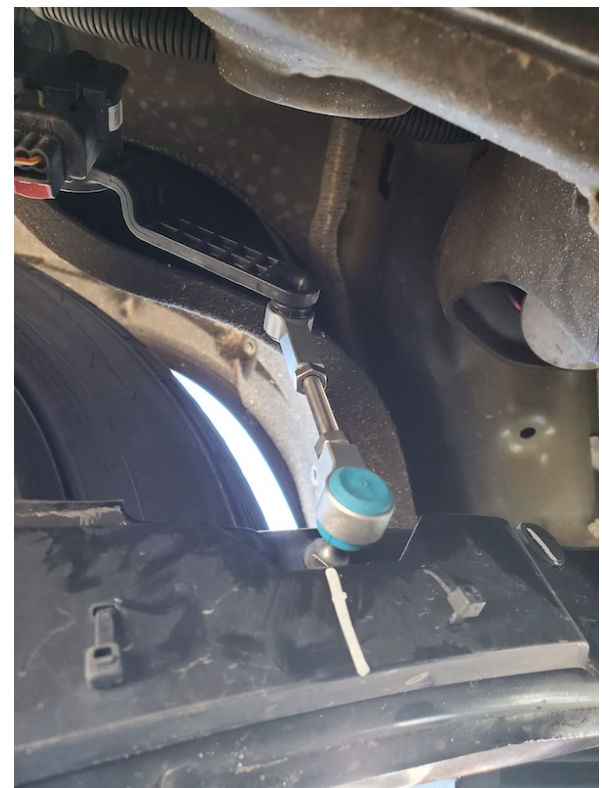
Front Stock Link



Adjustable Link Installed



Rear Stock Link



Adjustable Link Installed